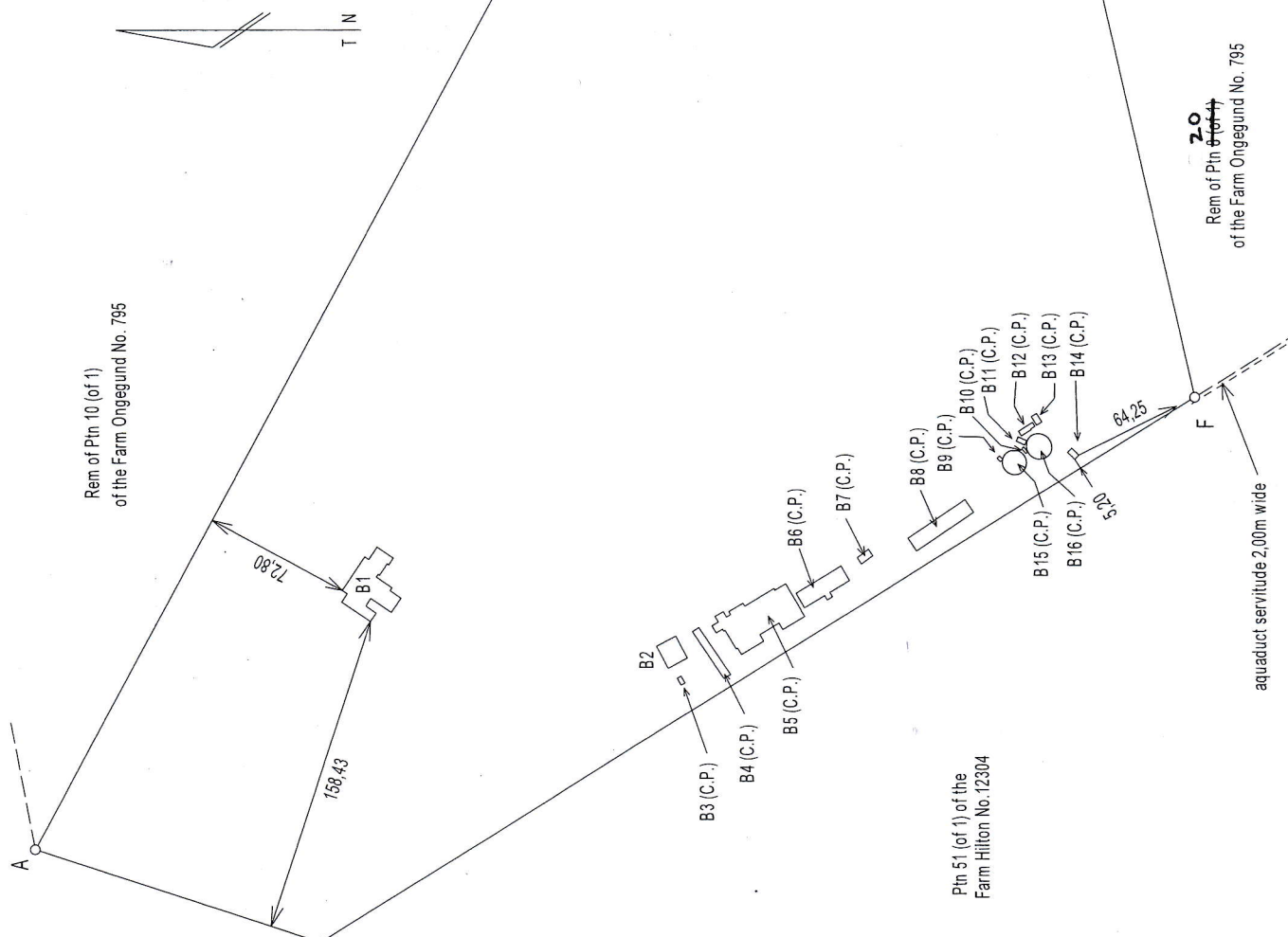


No. 15051  
the farm Umgeni Valley



Approved: *[Signature]*  
for Surveyor-General  
Date: 2023-01-26

Figure data

Sides	distance	angle
AB	820,54	298 21 40
BC	27,43	0 36 00
CD	6,10	270 36 00
DE	41,73	0 36 00
EF	517,45	77 10 10
FG	510,54	148 11 00
GA	147,55	198 16 20

NOTES:

- The figure A B C D E F G represents Portion 9 (of 1) of the farm Ongegund No. 795
- All measurements are given in metres.
- (C.P.) denotes common property
- B denotes building
- Land data adopted from **SR D330/2022**

NOTES (continued)

- The line a, irregular line, b represents the centreline of a road servitude 10 metres wide, vide diagram  
S.G. No. 1119/1981 and Deed of Servitude No.

LAND SURVEYOR: J T WELTER  
27 BURGER STREET  
PIETERMARITZBURG  
3201  
*[Signature]*  
Date: 14 FEB 2022

ULWAZI  
DRAWING TITLE:  
BLOCK PLAN  
Scale 1 : 2500

Rem of Ptn ~~10~~ 11  
of the Farm Ongegund No. 795

Ptin 51 (of 1) of the  
Farm Hillton No. 12304

aqueduct servitude 2,00m wide

of the Farm Ongegund No. 795

Ptin 11 (of 1)

Ptin 22 (of 12)

150,81  
~~147,96~~

B17 (C.P.)

B7 (C.P.)

B8 (C.P.)

B9 (C.P.)

B10 (C.P.)

B11 (C.P.)

B12 (C.P.)

B13 (C.P.)

B14 (C.P.)

B15 (C.P.)

B16 (C.P.)

64,25

5,50

road and pipeline servitude

road and pipeline servitude 15,24m wide

centreline of road servitude 10m wide

T N