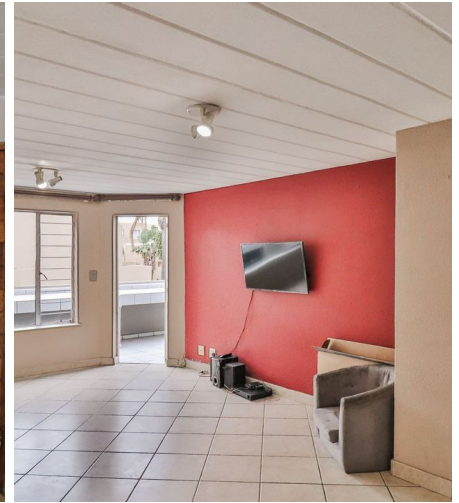


RESIDENTIAL FOR SALE

28 VILLA MED; 9, SWART DRIVE - PRESIDENT PARK, MIDRAND

Harcourts
Lifestyle (Midrand, Sandton,
Parks)



92  2  2 

Charming 2-Bedroom Apartment in Villa Med, Secure President Park Complex

Discover this inviting 2-bedroom apartment located on the second floor of the secure Villa Med complex in the heart of President Park. Perfect for individuals, couples, or small families, this apartment combines comfort and convenience with a touch of potential for personalization.

The apartment features a spacious open-plan layout with a kitchen and lounge area. The living space is bright and welcoming, with direct access to a large balcony—perfect for enjoying your morning coffee or hosting intimate gatherings.

There are two well-proportioned bedrooms. The main bedroom includes a compact en-suite bathroom for added privacy and convenience.

The kitchen is functional, though it does require some attention, offering a fantastic opportunity to customize it to your taste.

The Villa Med complex provides secure parking under carports, ensuring your

Price R670,000
Monthly Levy R1,600
Rates R550
Land Size 92m²
Floor Size 92m²
Bedrooms 2
Bathrooms 2
Lounges 1
Parking 1
Pool Yes

Sally
Sally Slade
084 589 2341

Harcourts Real Estate
 Midrand CC Harcourts
 Lifestyle (Midrand, Sandton,
 Parks), a franchisee of ,
 registered with the PPRA.

Web Ref: RL33871

